

ClickLink

Logging Software
For
Hamilton Arc Sensor Series

Operation Manual

Ver. 1.0.2

Note

Your Arc Sensor ID must be identified. Normally set "1"

The communication speed must be set at default.



Programmed and Designed by *T&C Technical*, Japan

All rights reserved

Index

INTRODUCTION	3
PACKAGE AND USB PORT SPECIFICATION	3
USB PORT SPECIFICATION.....	3
ARC COM ADAPTOR COMMUNICATION KIT	3
RUN ON WINDOWS XP,7	4
RUN CLICKLINK	5
PORT SELECTION.....	5
LOGGING.....	5
GRAPH	5
OTHER SCREEN.....	6
CLOSE.....	6
LOCATION OF SAMPLING DATA	6
RUN ON WINDOWS 8	7

Introduction

Click Link is for using with Hamilton Arc Sensor Series to record and display the measurement value on your Windows computer.

The measurement values are recorded as CSV format in a provided USB memory.

Package and USB port specification

The software is in a USB memory and provided with the PC connection kit "Arc Com Adaptor Communication kit".

USB port specification

Need two USB 2.0 or 3.0 ports on your computer.

One port is for communication, another one is for USB memory.

All datas are stored and recorded in a USB memory.

Arc Com Adaptor Communication Kit

1) USB Memory : 1

Contents

Software: ClickLink、 ClickCal

Communication driver: USB-Nano-485

Platform: Microsoft® .NET Framework 4.0

ClickLink Operation Manual (This document)

ClickCal Operation Manual

2) Arc Com Adaptor: 1

3) USB Cable: 30cm

4) Sensor Cable with VP8 socket: 1m

Run on Windows XP,7




- 1) Plug the USB memory into the USB prot.
- 2) Install .Net Framework4.0 in your computer.
- 3) Copy USB-Nano-485 driver folder.
- 4) Connect Arc Com Adaptor with a USB cable to your computer.



- 5) Intall the USB-NANO-485 driver. (Ignore the alert message and move forward)
- 6) After installing, Connect the sensor cable to Arc Com Adaptor and connect your Arc Sensor.



- 7) Double Click  in a USB memory, and run the software. This software does not require the use of the installer.

If the software is copied or moved to your computer or other computers, the software is automatically disabled and will not work. The software can only be used with the provided USB stick.

Run ClickLink

Port Selection

Click the ● to open the port selection screen and select the proper port which Arc sensor is connected.



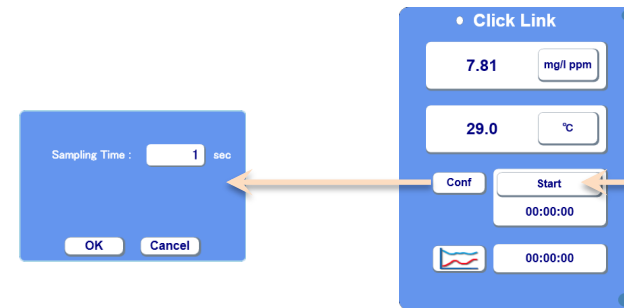
Measurement

When the communication is established, the circle becomes white (○) and measured value is displayed on main screen.

Logging

Click Conf button, set the interval time and click OK button.

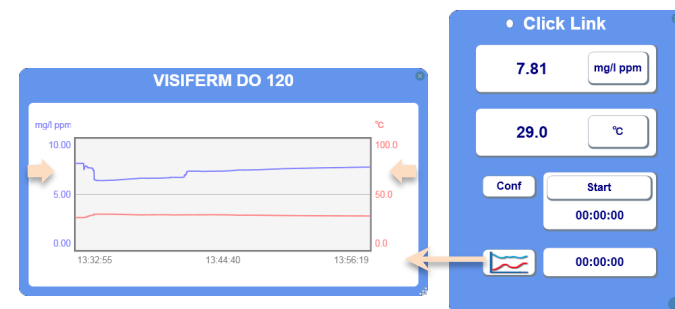
Return to main screen and click Start button.



Graph

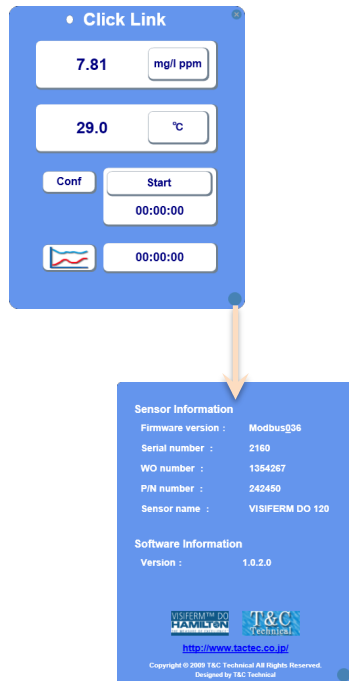
Click Graph button to display the current measurement trend.

Click the vertical scale (right or left), you can change the scale of each parameter to adjust the position of the trend.



Other screen

You can check easily the sensor information and software version.



Close

Click on the right upper corner of main screen to close the software. After hardware remove procedure (Windows standard procedure), you can remove the USB memory and adaptor.

Location of Sampling data

1. Sampling data (CSV file) is created in a USB memory.
2. If you need the file during the sampling, copy the file and move it to your desktop.

Do not move the original file during the logging.

3. **Do not open the sampling data file during the sampling.** It will cause the error and Click Link is automatically shut down.

Run on Windows 8 Windows 8

- 1) You need to configure your PC at first.
- 2) Display “Charms” and click “Settings”.
- 3) Click “Change PC Settings”
- 4) Click “General”
- 5) Click “Restart now” in “Advance Startup”
- 6) Click “Troubleshoot”
- 7) Click “Advanced Options”
- 8) Click “Startup Settings”
- 9) Click “Restart” button
- 10) Push 7 to select “Disable driver signature enforcement” and Enter
key to restart Windows 8.
- 11) Plug the USB memory in your computer and follow the same
manner which is described in Windows XP,7.